



<https://murray-buildings-cabins.business.site/>

24501 I-35, Kyle, TX 78640

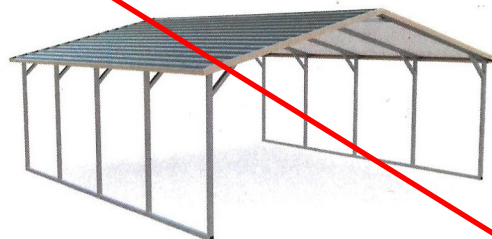
VERTICAL ROOF

(512) 268-8201

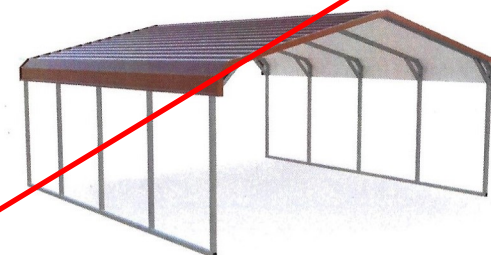
M-F 9AM-5:30PM



BOXED EAVE ROOF



REGULAR ROOF



12x20	18x20	20x20	22x20	24x20
\$ 1,295	\$ 1,495	\$ 1,745	\$ 1,995	\$ 2,095
12x25	18x25	20x25	22x25	24x25
\$ 1,695	\$ 1,845	\$ 2,095	\$ 2,445	\$ 2,545
12x30	18x30	20x30	22x30	24x30
\$ 2,045	\$ 2,195	\$ 2,395	\$ 2,895	\$ 3,095
12x35	18x35	20x35	22x35	24x35
\$ 2,395	\$ 2,545	\$ 2,845	\$ 3,345	\$ 3,545
12x40	18x40	20x40	22x40	24x40
\$ 2,745	\$ 2,995	\$ 3,195	\$ 3,895	\$ 4,095
12x45	18x45	20x45	22x45	24x45
\$ 3,090	\$ 3,440	\$ 3,940	\$ 4,540	\$ 4,740
12x50	18x50	20x50	22x50	24x50
\$ 3,490	\$ 3,790	\$ 4,290	\$ 4,990	\$ 5,190

12x20	18x20	20x20	22x20	24x20
\$ 1,095	\$ 1,295	\$ 1,545	\$ 1,695	\$ 1,895
12x25	18x25	20x25	22x25	24x25
\$ 1,295	\$ 1,445	\$ 1,695	\$ 2,045	\$ 2,345
12x30	18x30	20x30	22x30	24x30
\$ 1,545	\$ 1,795	\$ 2,045	\$ 2,395	\$ 2,695
12x35	18x35	20x35	22x35	24x35
\$ 1,795	\$ 2,045	\$ 2,395	\$ 2,745	\$ 3,145

12x20	18x20	20x20	22x20	24x20
\$ 995	\$ 1,195	\$ 1,445	\$ 1,595	\$ 1,695
12x25	18x25	20x25	22x25	24x25
\$ 1,195	\$ 1,345	\$ 1,595	\$ 1,945	\$ 2,045
12x30	18x30	20x30	22x30	24x30
\$ 1,445	\$ 1,595	\$ 1,945	\$ 2,295	\$ 2,495
12x35	18x35	20x35	22x35	24x35
\$ 1,695	\$ 1,845	\$ 2,295	\$ 2,645	\$ 2,845

*45 PSF AVAILABLE SEE REVERSE FOR MORE DETAILS

INDUSTRY LEADER IN DELIVERY TIMES

STANDARD FEATURES *Rated for 35PSF-140MPH on concrete*

Standard carport features include the following: 14 gauge galvanized steel framing, 29 gauge metal roofing with twenty year Beckers paint system, framing spaced 5' on center or less, and includes both roof and leg braces for additional strength and stability. Concrete and rebar anchors included in base price, for ground installations add ground anchor package. **Base leg/eave heights are 6' tall.**

20 Year Limited Warranty

On roofing materials.
*Not available for regular style and boxed eave style longer than 31 feet.

FLYING HIGH WITH GREAT DEALS



22 YEARS
of **QUALITY**

FINANCING AVAILABLE

FREE INSTALLATION ON YOUR LEVEL LOT

90 DAY WORKMANSHIP WARRANTY

FREE EAGLE OR STAR W/PURCHASE OF GABLE END OR CLOSED END

12 GAUGE FRAME INCREASES SNOW LOAD RATING TO 45 PSF AND 105 MPH.

12 GA. FRAME UPGRADE	20' L	25' L	30' L	35' L	40' L	45' L	50' L
12' - 18' WIDE	\$150	\$200	\$250	\$300	\$350	\$400	\$450
20' - 24' WIDE	\$200	\$250	\$300	\$350	\$400	\$450	\$500
GROUND PACKAGE	\$120	\$180	\$180	\$240	\$240	\$240	\$300

**Units installed on ground must add ground package for rating.*

EAVE HEIGHT	HEIGHT	20' L	25' L	30' L	35' L	40' L	45' L	50' L
	7' ↑	\$60	\$75	\$90	\$105	\$120	\$180	\$200
	8' ↑	\$120	\$150	\$180	\$210	\$240	\$360	\$400
	9' ↑	\$180	\$225	\$270	\$315	\$360	\$540	\$600
	10' ↑	\$240	\$300	\$360	\$420	\$480	\$720	\$800
	11' ↑	\$300	\$375	\$450	\$525	\$600	\$900	\$1,000
	12' ↑	\$360	\$450	\$540	\$630	\$720	\$1,080	\$1,200
	*13' ↑	\$550	\$700	\$800	\$1,000	\$1,150	\$2,020	\$2,230
	*14' ↑	\$600	\$760	\$920	\$1,080	\$1,240	\$2,210	\$2,440

**Single reinforced legs*

CLOSE BOTH SIDES	HEIGHT	20' L	25' L	30' L	35' L	40' L	45' L	50' L
	6'	\$375	\$460	\$555	\$660	\$775	\$835	\$920
	7'	\$435	\$540	\$655	\$780	\$915	\$975	\$1,080
	8'	\$500	\$625	\$760	\$905	\$1,060	\$1,125	\$1,250
	9'	\$565	\$710	\$865	\$1,030	\$1,205	\$1,275	\$1,420
	10'	\$635	\$800	\$975	\$1,160	\$1,355	\$1,435	\$1,600
	11'	\$705	\$890	\$1,085	\$1,290	\$1,505	\$1,595	\$1,780
	12'	\$780	\$985	\$1,200	\$1,425	\$1,660	\$1,765	\$1,970
	13'	\$855	\$1,080	\$1,315	\$1,560	\$1,815	\$1,935	\$2,160
	14'	\$935	\$1,180	\$1,435	\$1,700	\$1,975	\$2,115	\$2,360
VERT. SIDES	6'-10'	\$300	\$350	\$400	\$450	\$500	\$550	\$600
	11'-14'	\$400	\$475	\$550	\$625	\$700	\$775	\$850
V. WAINSCOTING		\$250	\$315	\$375	\$440	\$500	\$565	\$625

CLOSE ONE END Per End	HEIGHT	12' W	18' W	20' W	22' W	24' W
	6'	\$435	\$565	\$620	\$765	\$800
	7'	\$520	\$625	\$685	\$835	\$880
	8'	\$550	\$695	\$760	\$920	\$970
	9'	\$580	\$775	\$845	\$1,020	\$1,070
	10'	\$670	\$865	\$940	\$1,135	\$1,180
	11'	\$730	\$965	\$1,045	\$1,265	\$1,300
	12'	\$790	\$1,075	\$1,160	\$1,410	\$1,430
	13'	N/A	\$1,195	\$1,285	\$1,570	\$1,585
	14'	N/A	\$1,325	\$1,465	\$1,605	\$1,745
VERT. END Per End	6'-10'	\$125	\$225	\$250	\$275	\$300
	11'-14'	\$150	\$250	\$275	\$300	\$325
V. WAINSCOTING Per End		\$75	\$115	\$125	\$140	\$155

STANDARD CARPORT OPTIONS

~~EXTRA PANELS~~

LENGTH	PRICE	*J-TRIM
20'	\$100	Add \$50
25'	\$120	Add \$60
30'	\$140	Add \$70
**35'	\$160	Add \$80
**40'	\$180	Add \$90
**45'	\$200	Add \$100
**50'	\$220	Add \$110

*J-Trim price covers both sides
**Continuous panel when possible

~~STANDARD HEADERS / LARGE OPENINGS UNITS 12' - 30'~~

OPENINGS ONLY		OPENING WITH DOOR	
ON END 6'-16'	\$125	ON END 6'-12'	\$0
ON SIDE 6'-12'	\$225	ON END 13'-16'	\$125
ON SIDE 13'-16'	\$300	ON SIDE 6'-12'	\$125
		ON SIDE 13'-16'	\$200

Side must be 1' taller than desired door height. 14'x14 requires 2 foot taller

WALK-IN DOORS
Right Outswing / Window Included

36"x80"	\$275
---------	-------

~~ROLL UP GARAGE DOORS~~
Electric door opener prep available

6'x7'	\$375
8'x8'	\$500
9'x8'	\$525
10'x8'	\$575
10'x10'	\$700
12'x12'	\$1,050
*14'x14'	\$2,450

*Special Order, lift required

WAINSCOTING

HORIZONTAL	FREE on buildings with eaves 9' or taller.
------------	--

WINDOWS
White with Grid

24"x36"	\$150
30"x36"	\$180

COLORED SCREWS

ROOF (Base Price)	add 5%
SIDES	add 5%
PER END	add 5%

Subject to availability at participating locations only

45° TRIM KIT
a.k.a. Dutch Openings

PER OPENING	\$80
-------------	------

Must close end or side

FRAME OUTS

WALK-IN DOOR	\$85
WINDOW	\$70

Must close end or side

MOBILE HOME ANCHORS

EACH	\$30
------	------

INSULATION

DOUBLE BUBBLE TYPE (MOISTURE BARRIER)	R5	\$1.25 SF
2" FIBERGLASS	R7	\$1.75 SF

ROOF: Add 2' to width and multiply by length.
Ex. 24' wide x 26' long 26 x 26 = 676 sf x rate

SIDES: Multiply leg height by length by 2.
Ex. 26' long x 10' tall 10 x 26 = 260 x 2 = 520 sf x rate

ENDS: Add 1.5 to leg height, multiply by building width.
Ex. 24' wide x 10' tall 11.5 x 24 = 276 x 2 = 552 sf x rate

CONCRETE DIMENSIONS

Please note in order to clarify the understanding of building dimensions, we **NOW** reference frame size instead of roof dimensions.
Ex. 20' wide x 30' long unit will need a 20' wide x 30' long pad.

TRIMMED HALF PANELS 12' - 30'
Both Sides. Package cannot be split.

20' L	25' L	30' L	35' L	40' L
\$175	\$200	\$225	\$260	\$300

GABLES	GABLE END	VERTICAL GABLE	EXTENDED GABLE	EXTENDED VERTICAL GABLE
12' - 24' WIDE	\$175 PER END	\$225 PER END	\$350 PER END	\$375 PER END

WELDED TRUSS UPGRADE 18' - 24'

4' TRUSS FOR 18-22' WIDTHS	20' L	25' L	30' L	35' L	40' L	
	\$125	\$150	\$175	\$200	\$225	
6' TRUSS FOR 24' WIDTHS		\$175	\$225	\$275	\$325	\$375

EXTRA RAFTERS/ BOWS

12' - 24' W	ADDITIONAL HEIGHT
\$175 EA.	6' Incl. Add \$15 per ft. 14' max.

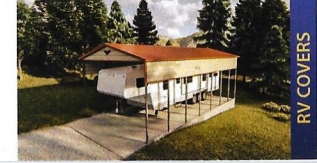
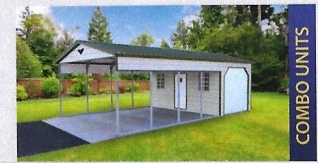
CONNECT FEE

SIDE CONNECTION FEES (Per Side)					
END TO END	20' L	25' L	30' L	35' L	40' L
\$100	\$120	\$140	\$160	\$180	\$200

ADDITIONAL LABOR FEES

BUILD OVER FEE	20' L	25' L	30' L	35' L	40' L	45' L	50' L
	\$150	\$175	\$200	\$250	\$275	\$325	\$350
CUT LEGS ON SITE		\$100	\$125	\$150	\$175	\$200	\$250

MORE BUILDING STYLES AVAILABLE



Eagle Carports

"Flying High with Great Deals"

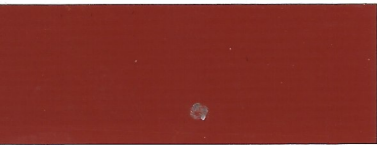


COLOR CHART

<https://murray-buildings-cabins.business.site/>



PATRIOT RED



BARN RED



VINTAGE BURGUNDY



EARTH BROWN



EVERGREEN



RAWHIDE*



CLAY*

NEW!



Beckers

Match the Color of your house

20 YEAR LIMITED WARRANTY

Beckers Group is the premier supplier of coil coatings. With 150 years of expertise and 24 locations in 19 countries, Beckers is the industry standard.

Panel Specifications:

5 Rib "AG" Panel Profile

36" Coverage

3/4" Rib Height

9" On Center Rib Spacing



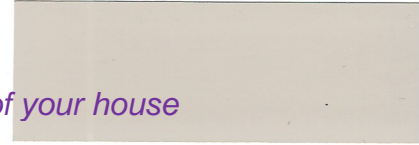
**Colors meet Energy Star requirements.*

ABOUT EAGLE

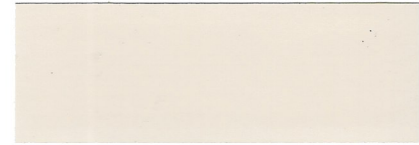
Eagle Carports, Inc. has been producing high-quality metal structures since 1997 and now covers over 1 million square miles of our great nation. With over 20 years of manufacturing, engineering, and construction experience we are able to provide exceptional yet economical storage solutions that meet and exceed customer expectations, meanwhile exceeding local building requirements.



ROYAL BLUE



SANDSTONE*



PEBBLE BEIGE*



QUAKER GRAY



PEWTER GRAY*



GALVALUME



WHITE*



BLACK