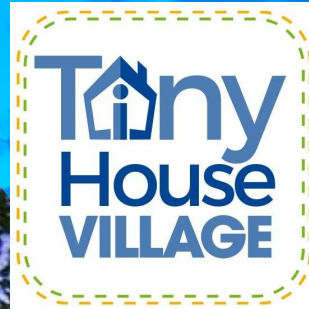


# ATHENS™

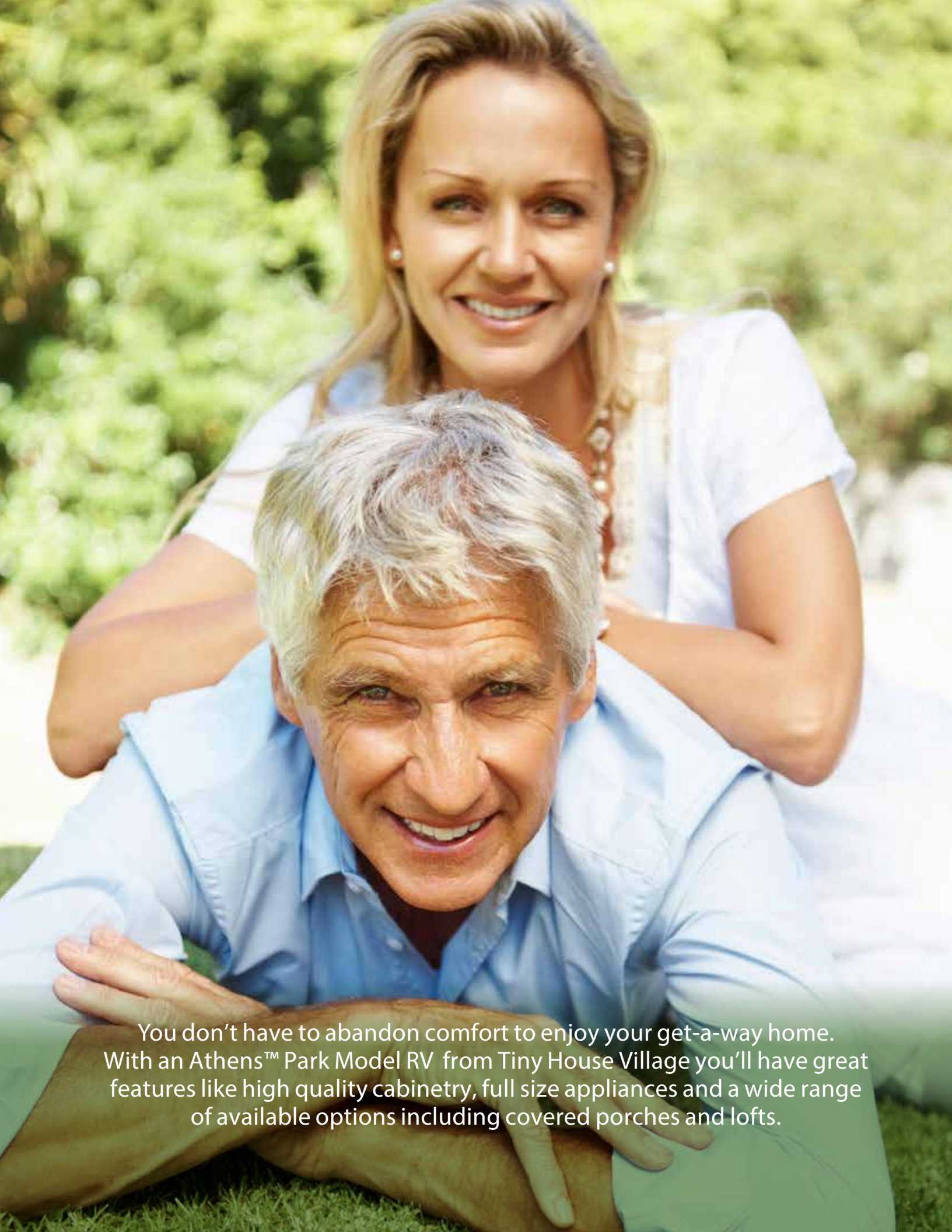
PARK MODEL RV'S



PARK MODEL  
SERIES

(512) 456-0899





You don't have to abandon comfort to enjoy your get-a-way home. With an Athens™ Park Model RV from Tiny House Village you'll have great features like high quality cabinetry, full size appliances and a wide range of available options including covered porches and lofts.



You'll enjoy your home away from home  
so much... you may never want to leave.



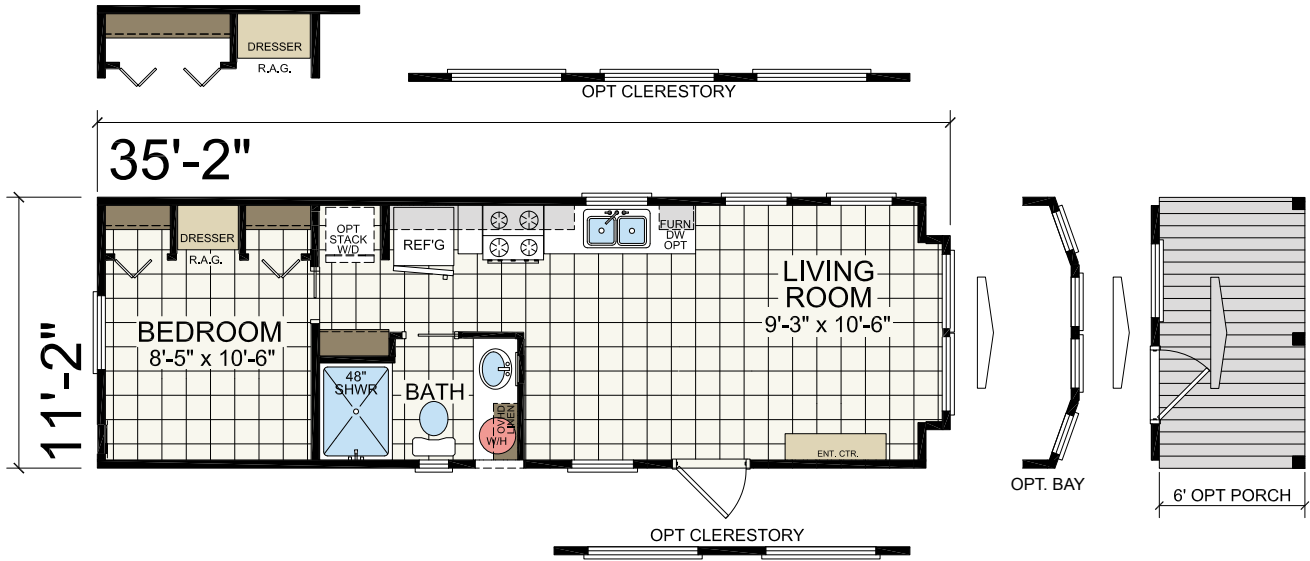


With a new Athens Park Model RV from Tiny House Village, you'll enjoy coming back to your favorite vacation spot year after year... and making your holidays and weekend getaways  
**a time to remember.**

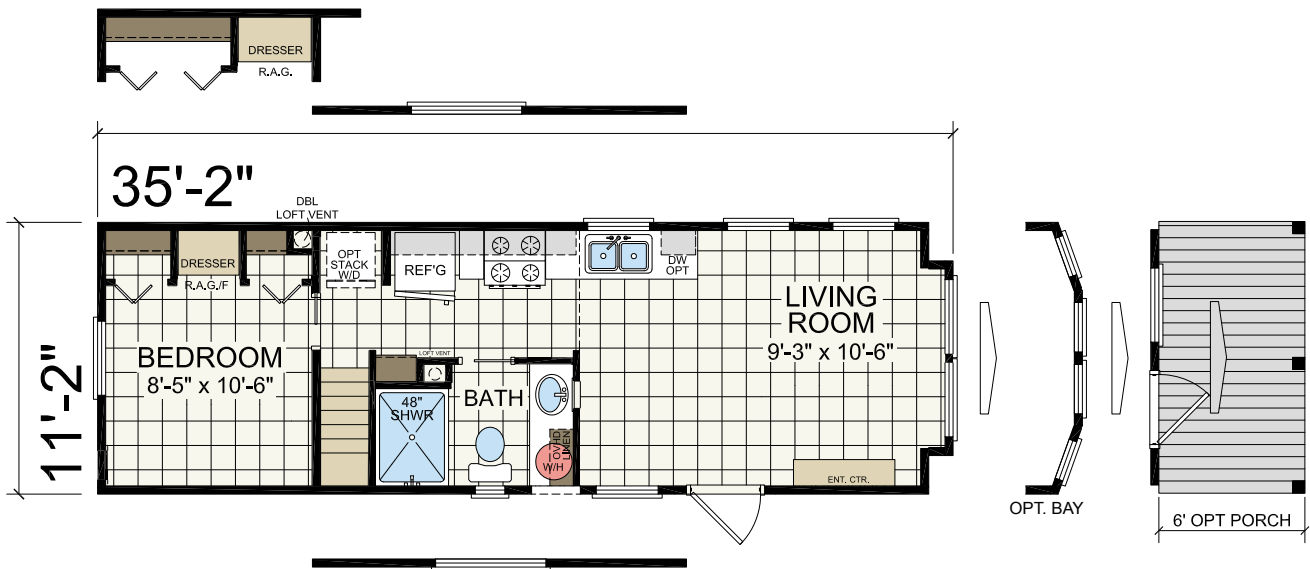




Model 503 11'-2" x 35'-2" | 1 bed-1 bath | 399 sq. ft.



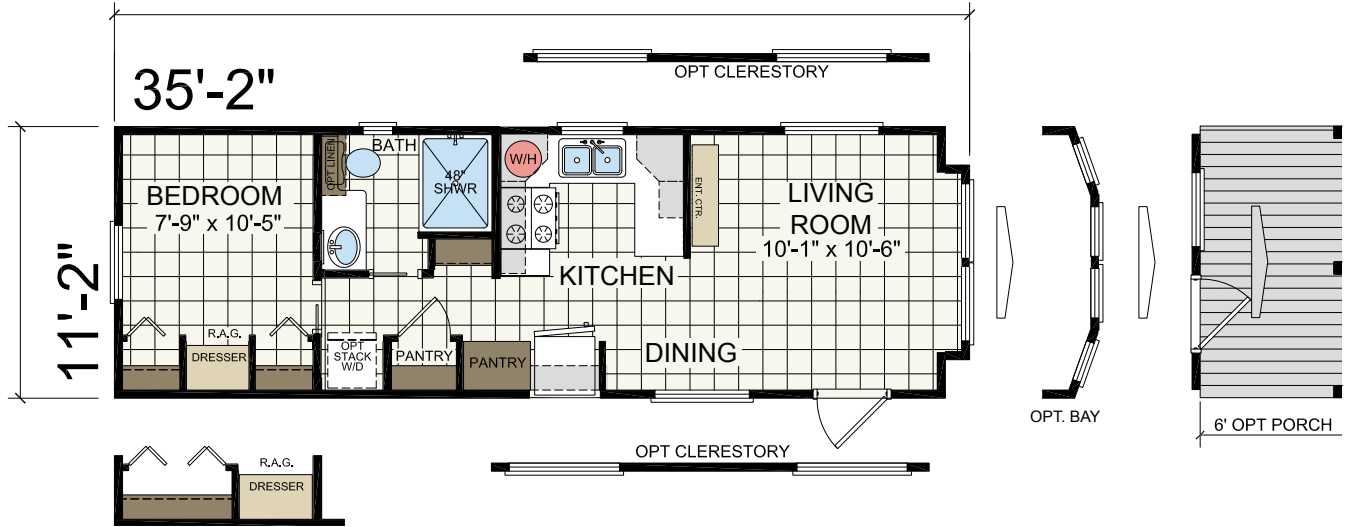
Model 503-SL 11'-2" x 35'-2" | 1 bed-1 bath | 399 sq. ft.



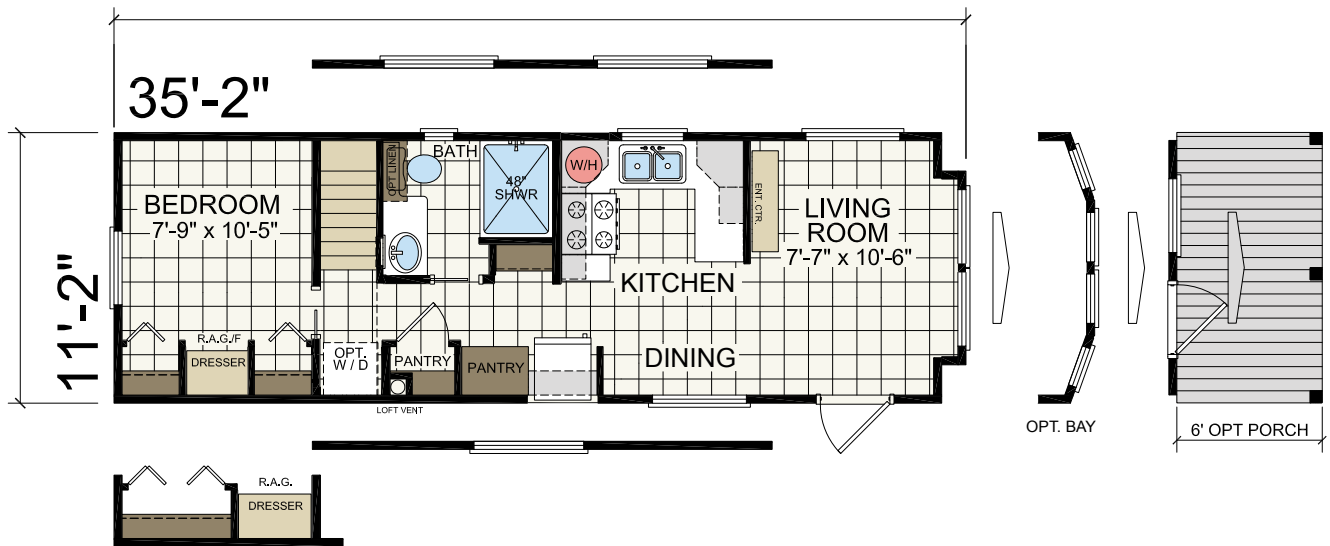


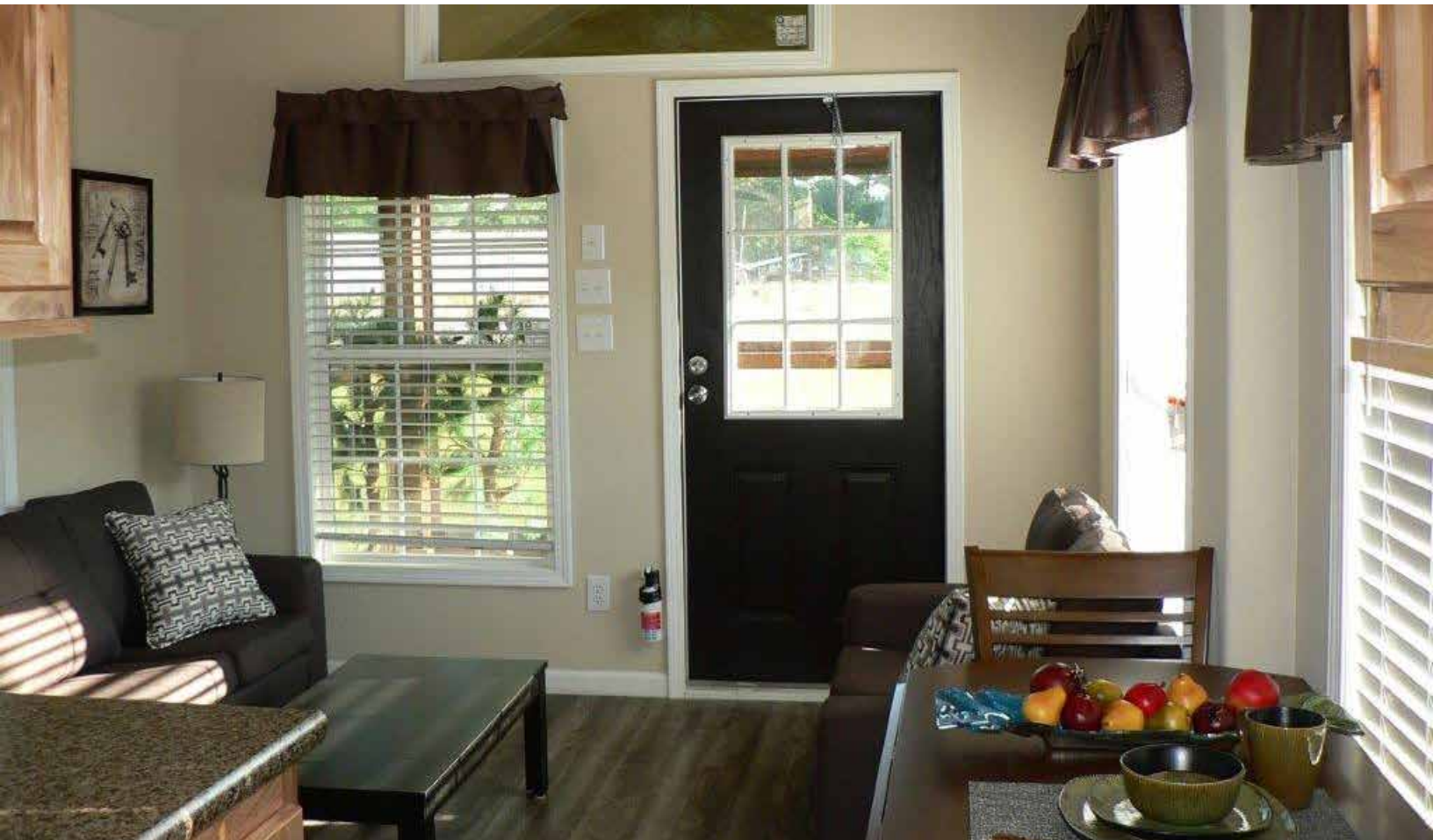


Model 504 11'-2" x 35'-2" | 1 bed-1 bath | 399<sub>sq.ft.</sub>

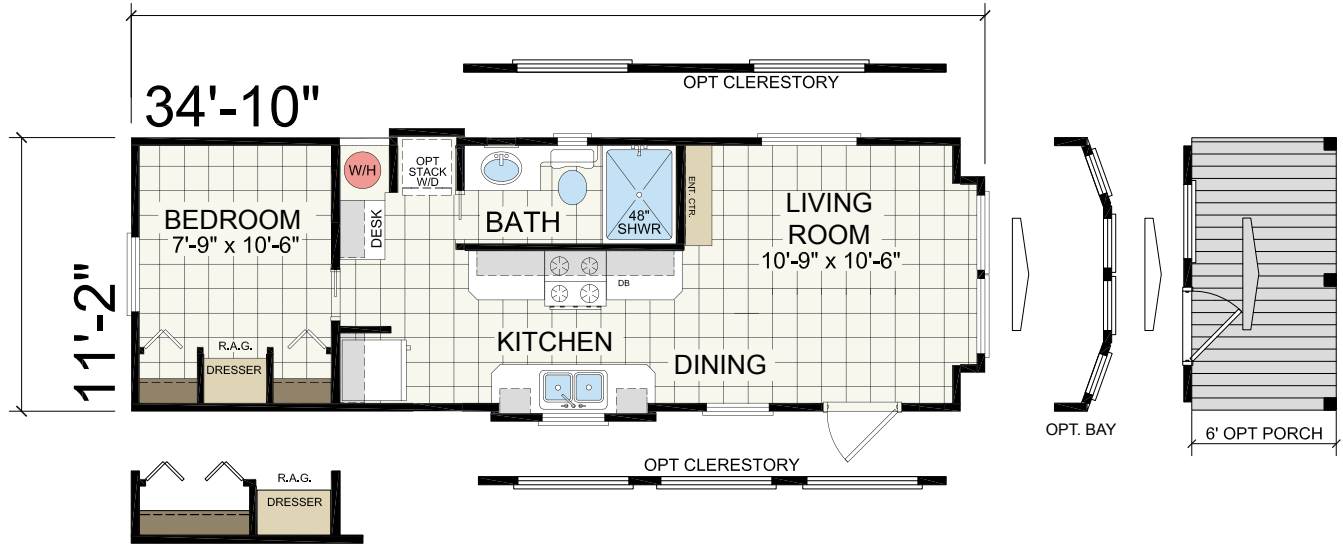


Model 504-SL 11'-2" x 35'-2" | 1 bed-1 bath | 399<sub>sq.ft.</sub>

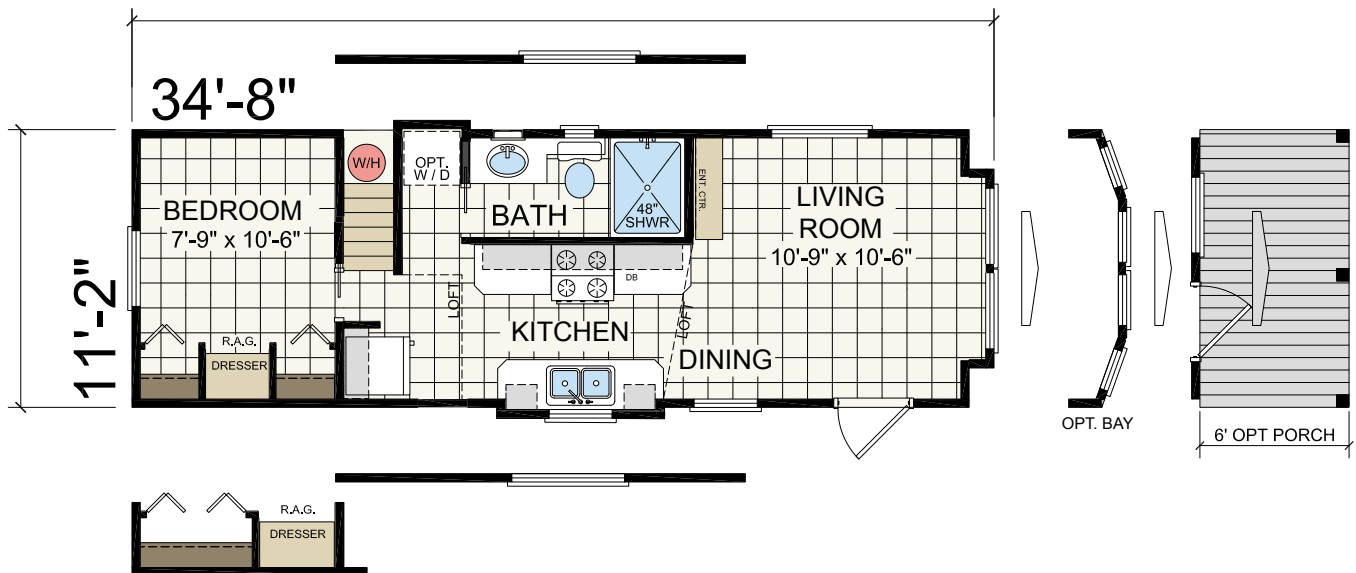




Model 505 11'-2" x 34'-10" | 1 bed-1 bath | 399 sq. ft.

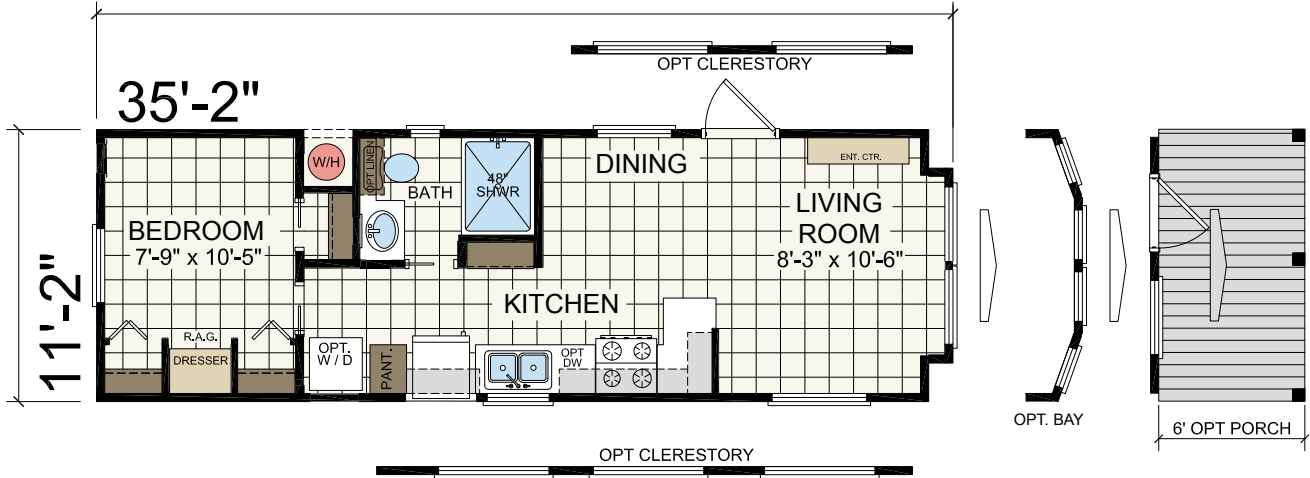


Model 505-SL 11'-2" x 34'-8" | 1 bed-1 bath | 399 sq. ft.

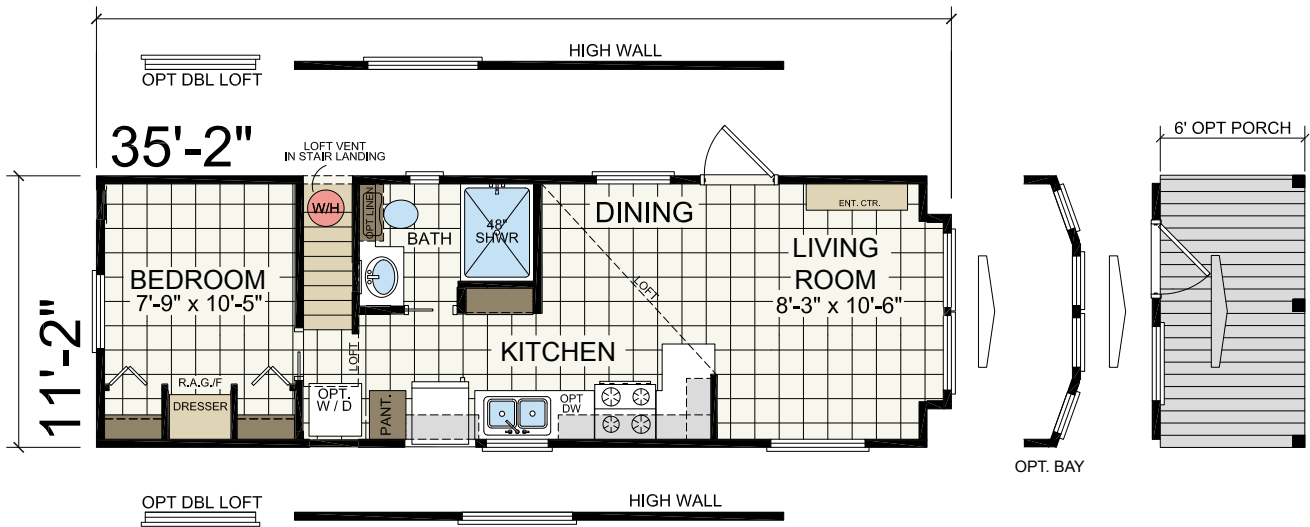




Model 506A 11'-2" x 35'-2" | 1 bed-1 bath | 399<sub>sq.ft.</sub>



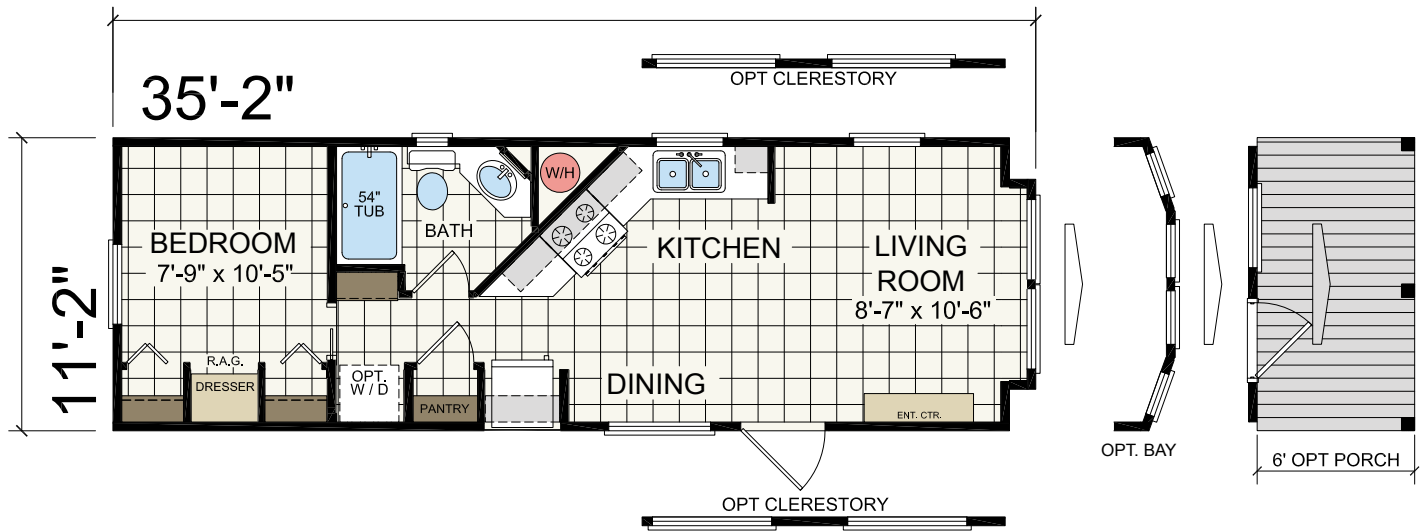
Model 506A-SL 11'-2" x 35'-2" | 1 bed-1 bath | 399<sub>sq.ft.</sub>



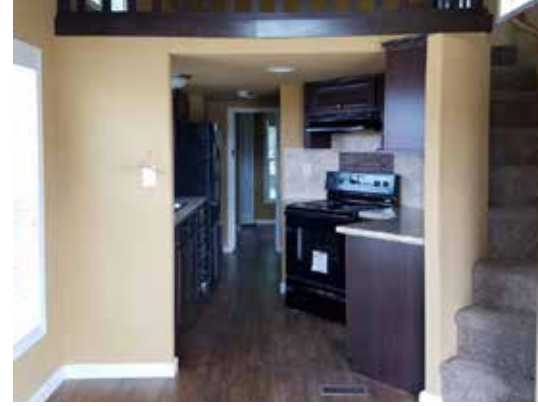




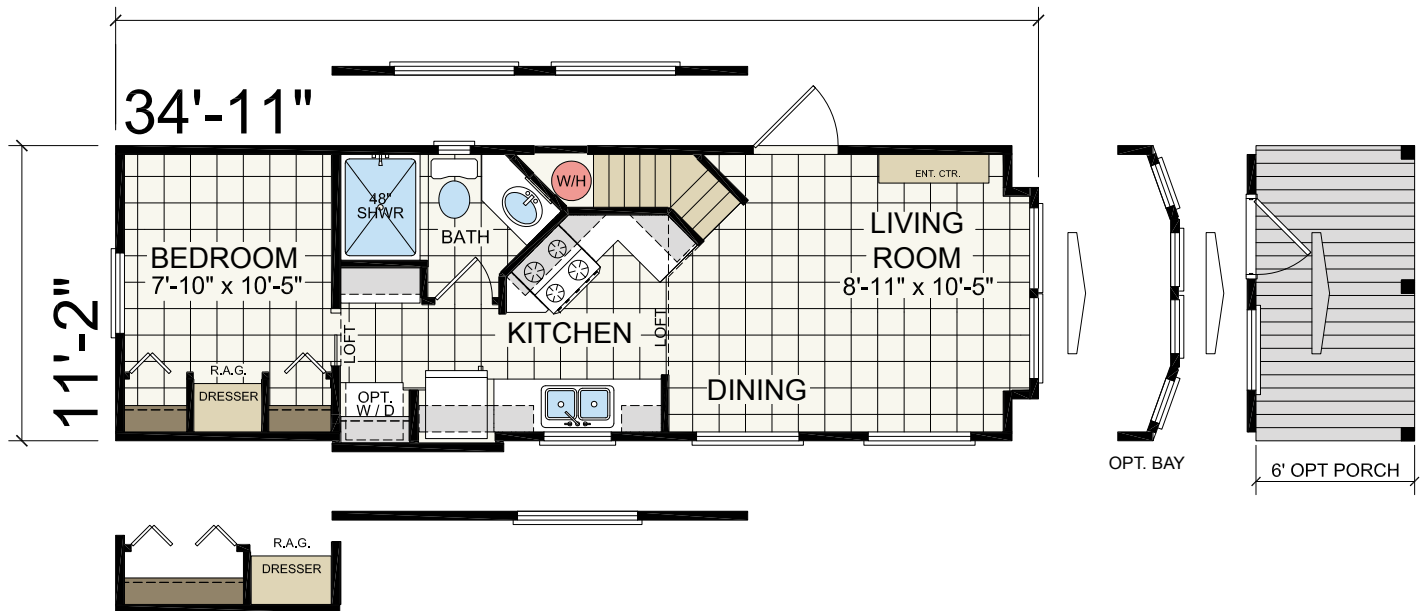
Model 507 11'-2" x 35'-2" | 1 bed-1 bath | 399<sub>sq.ft.</sub>



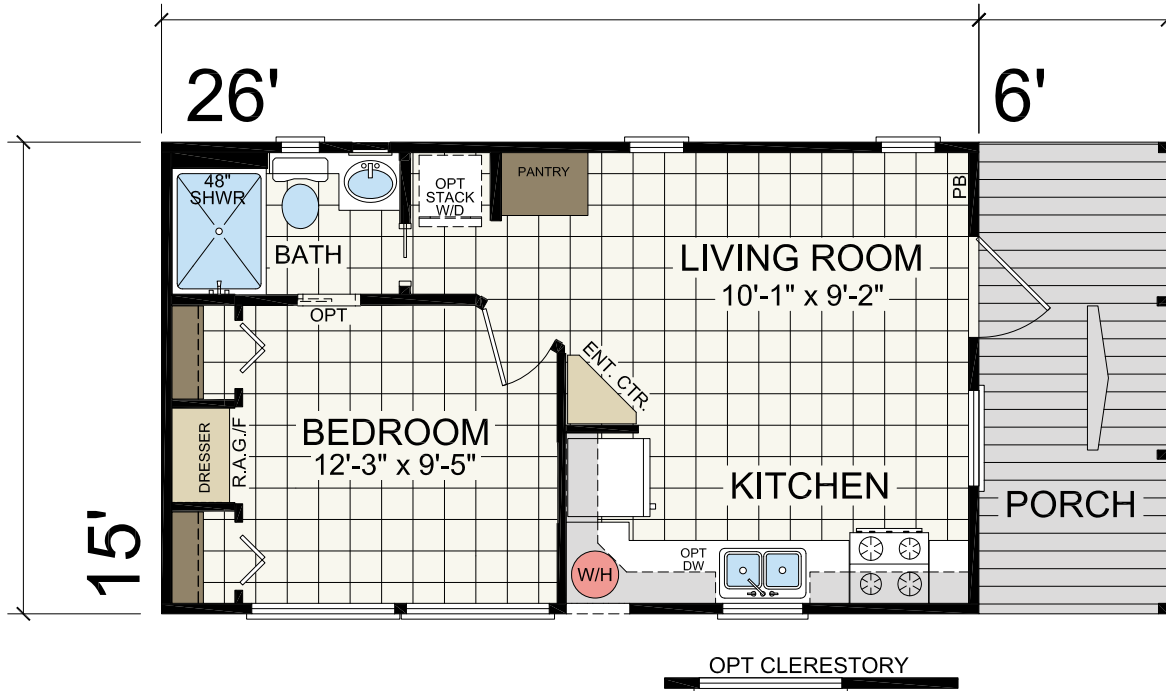




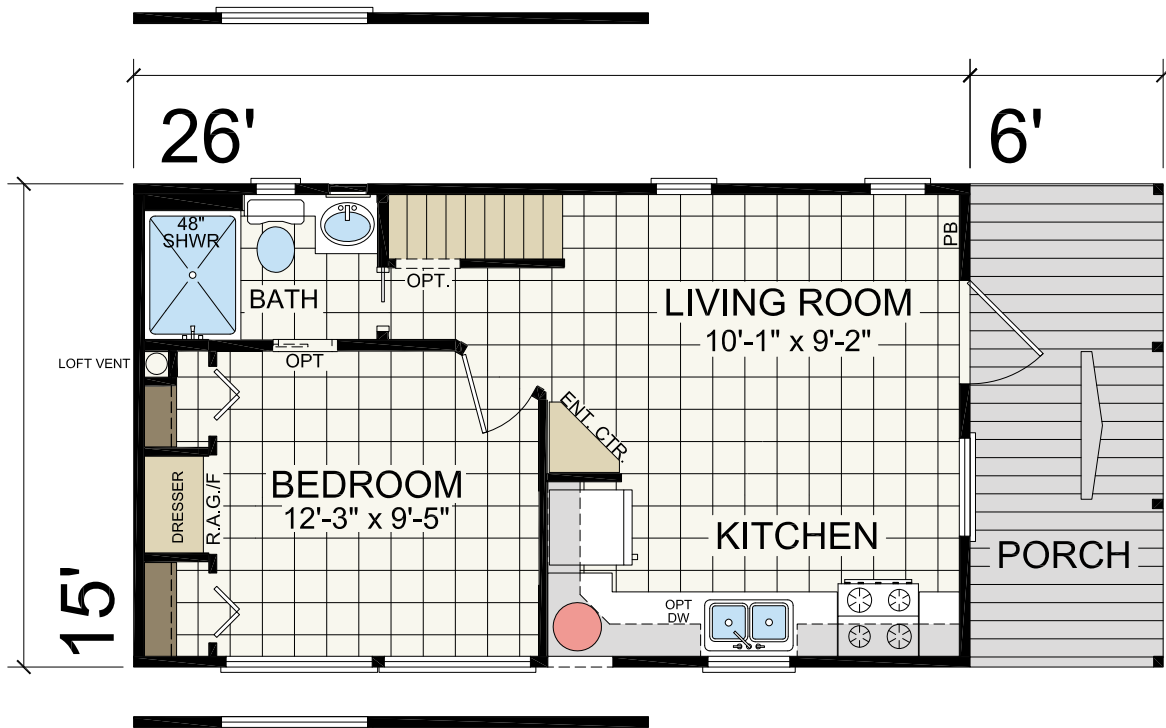
Model 509-A-SL 11'-2" x 34'-11" | 1 bed-1 bath | 399 sq.ft.



Model 514 15' x 32' | 1 bed-1 bath | 399 sq.ft.



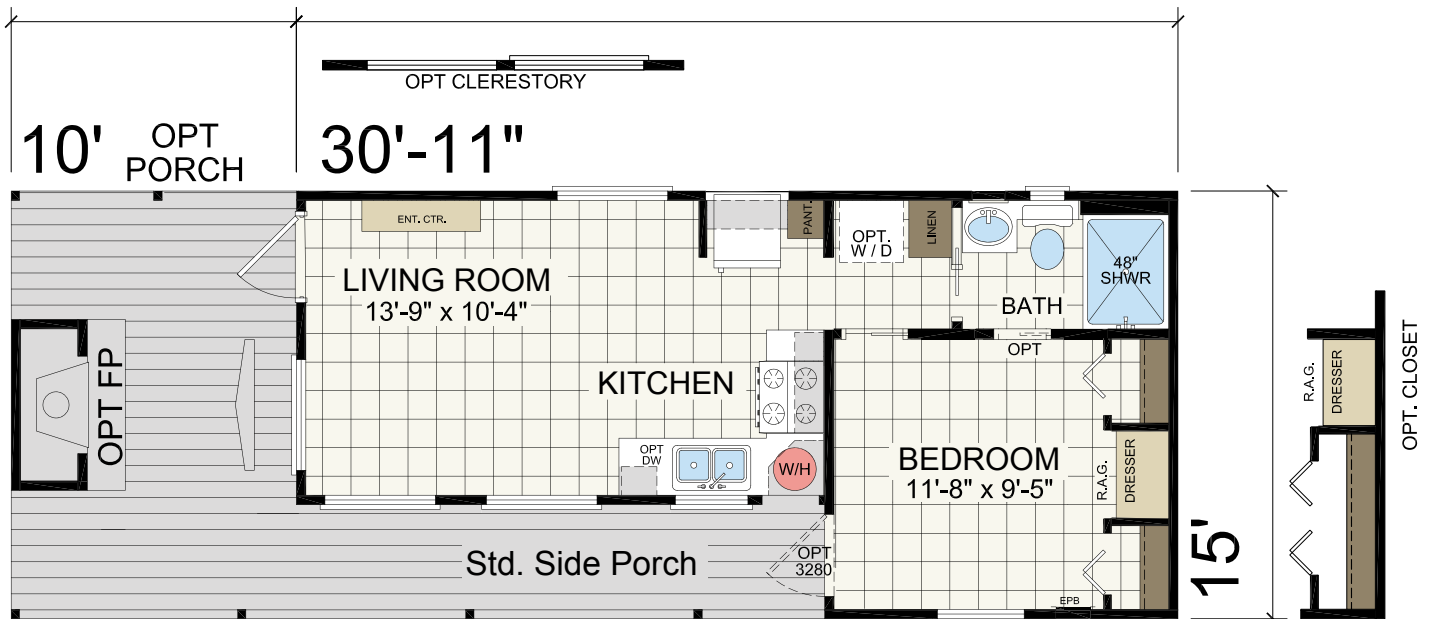
Model 514-SL 15' x 32' | 1 bed-1 bath | 399 sq.ft.





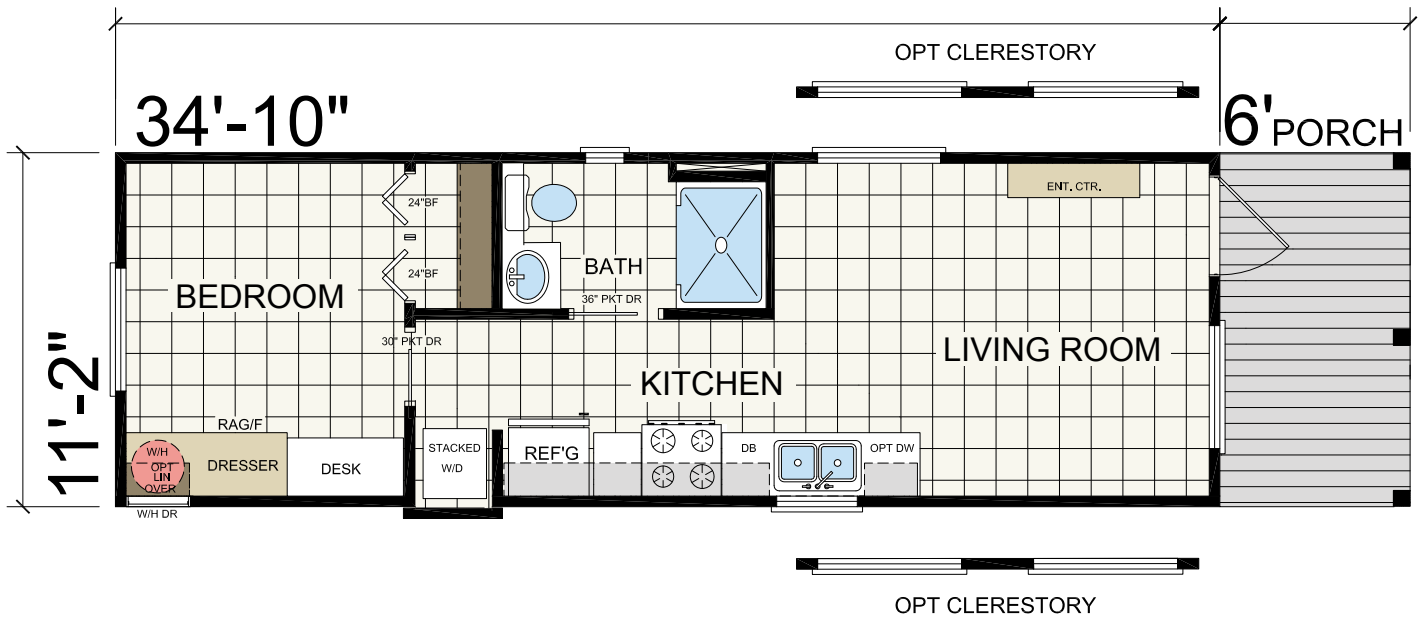


Model 516 15'x 30'-11" | 1 bed-1 bath | 399 sq.ft.





Model 517-A 11'-2" x 40'-10" | 1 bed-1 bath | 399 sq.ft





Model 518 11'-2" x 35'-2" | 1 bed-1 bath | 399 sq. ft.



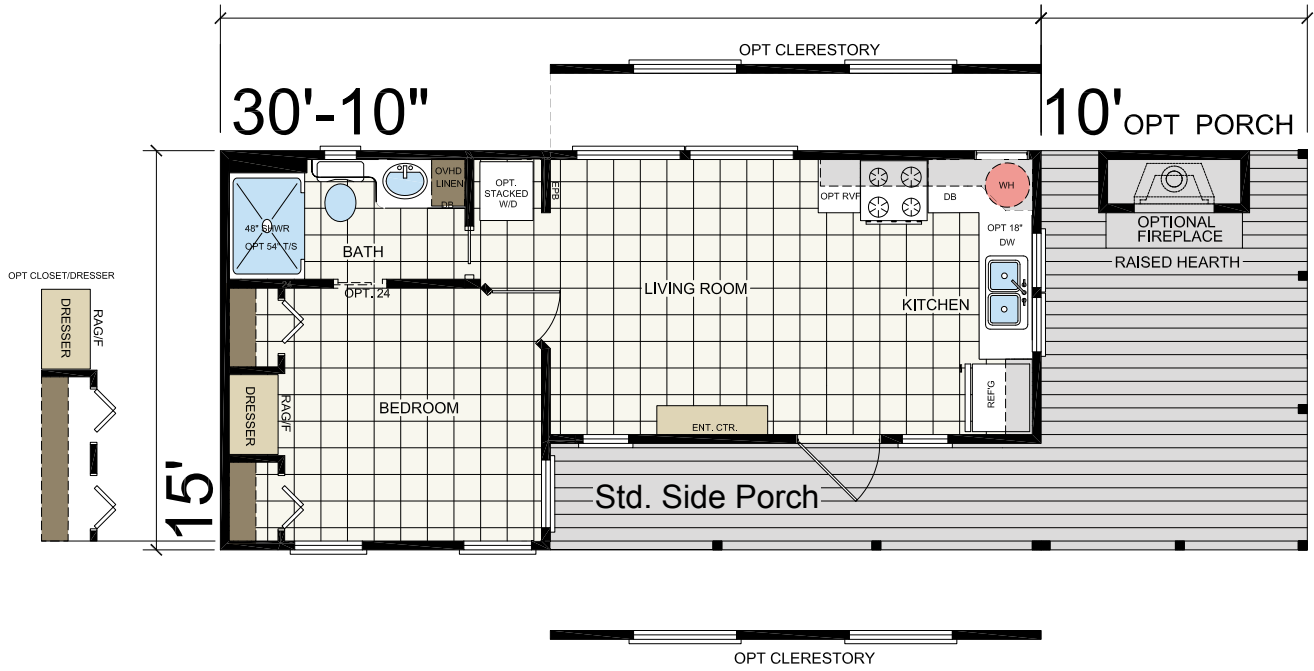




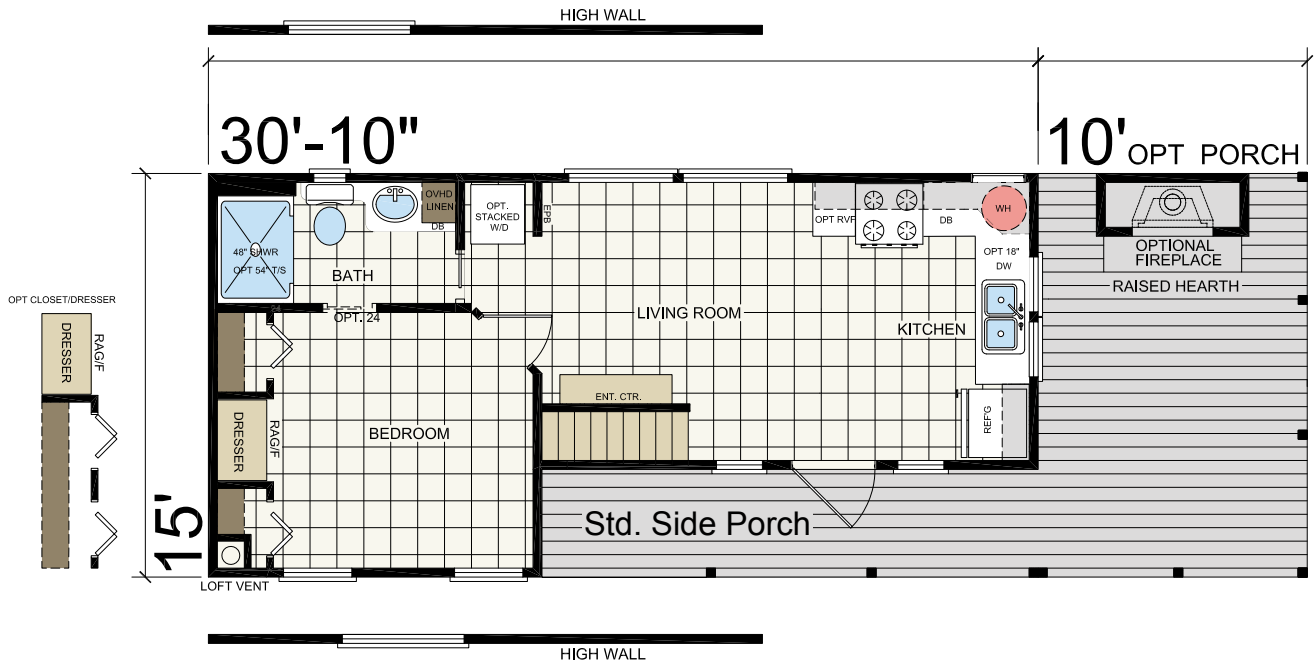




Model 523 15' x 30'-10" | 1 bed-1 bath | 399 sq.ft.

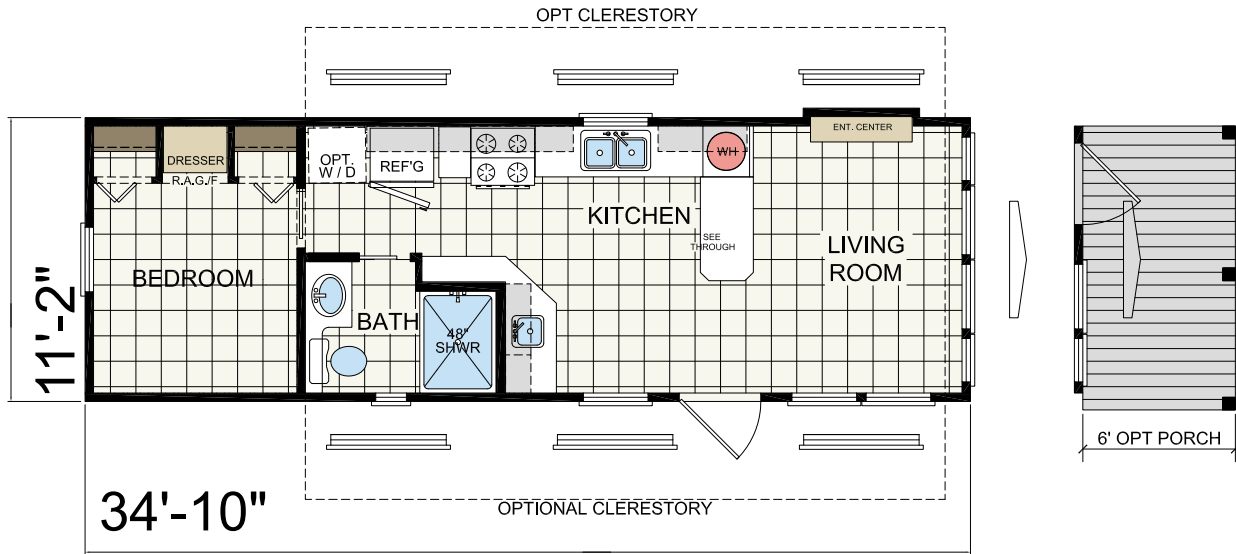


Model 523-SL 15'x 30'-10" | 1 bed-1 bath | 399 sq.ft.

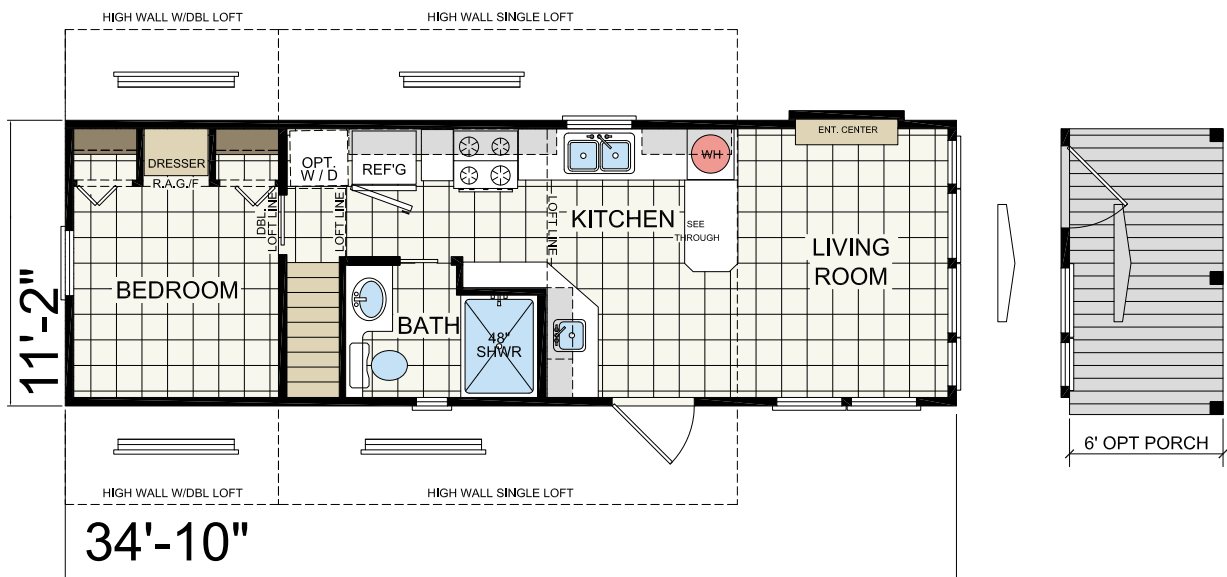




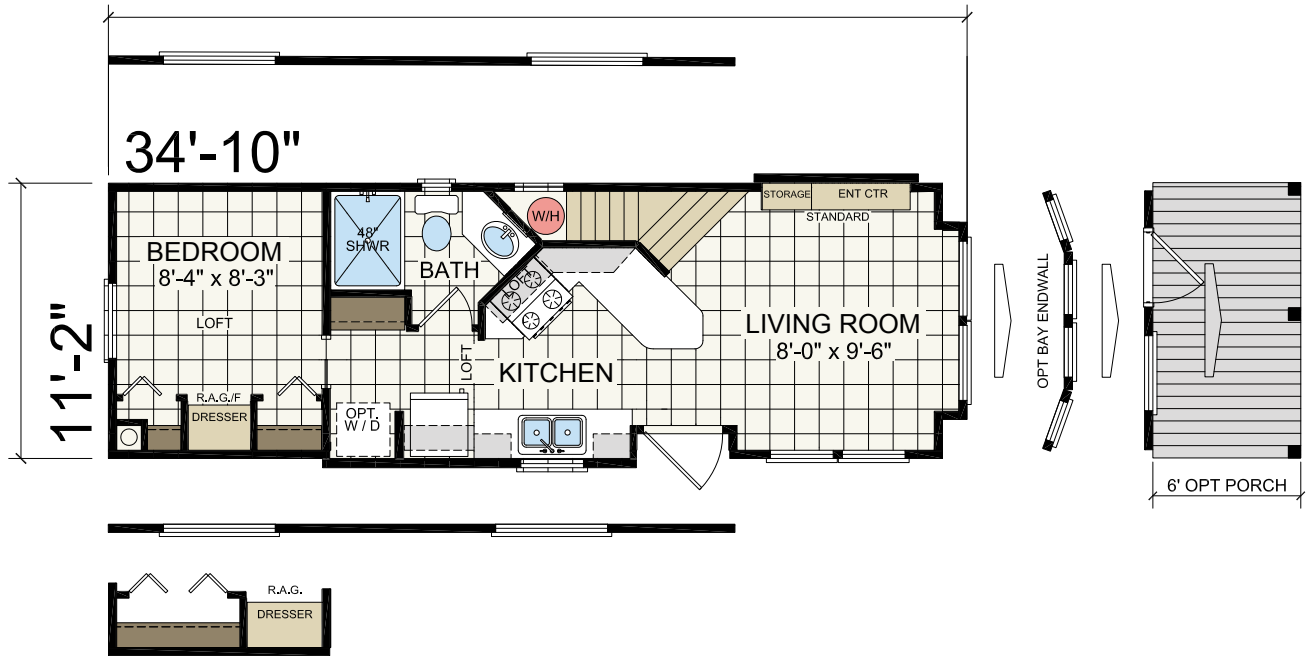
Model 528 11'-2" x 34'-10" | 1 bed-1 bath | 399 sq. ft.



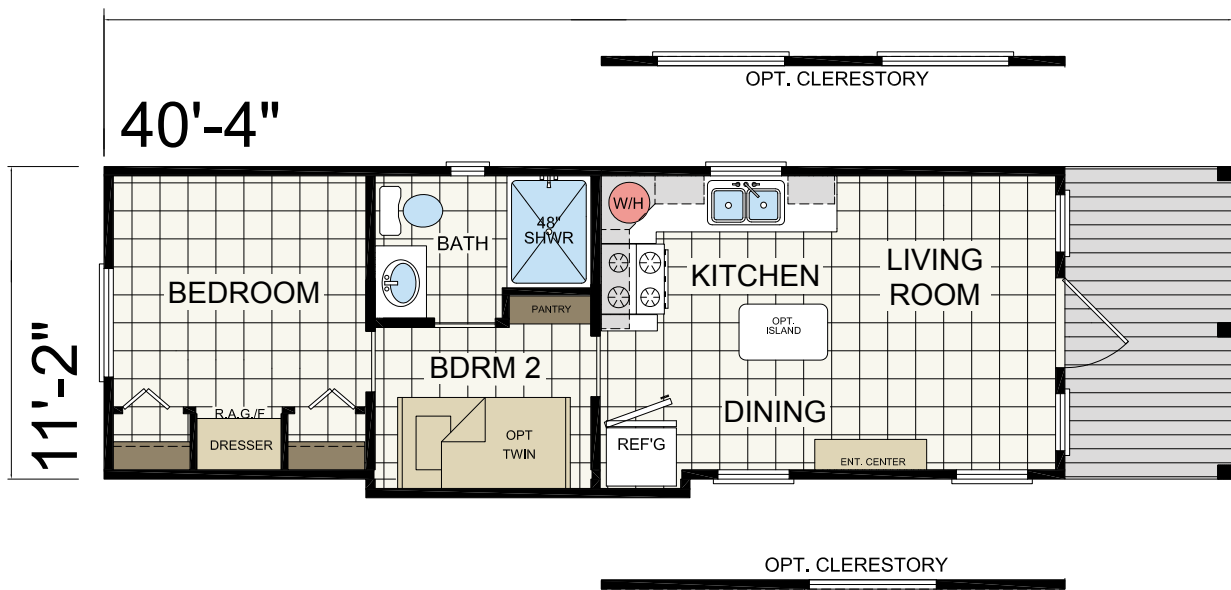
Model 528-SL 11'-2" x 34'-10" | 1 bed-1 bath | 399 sq. ft.



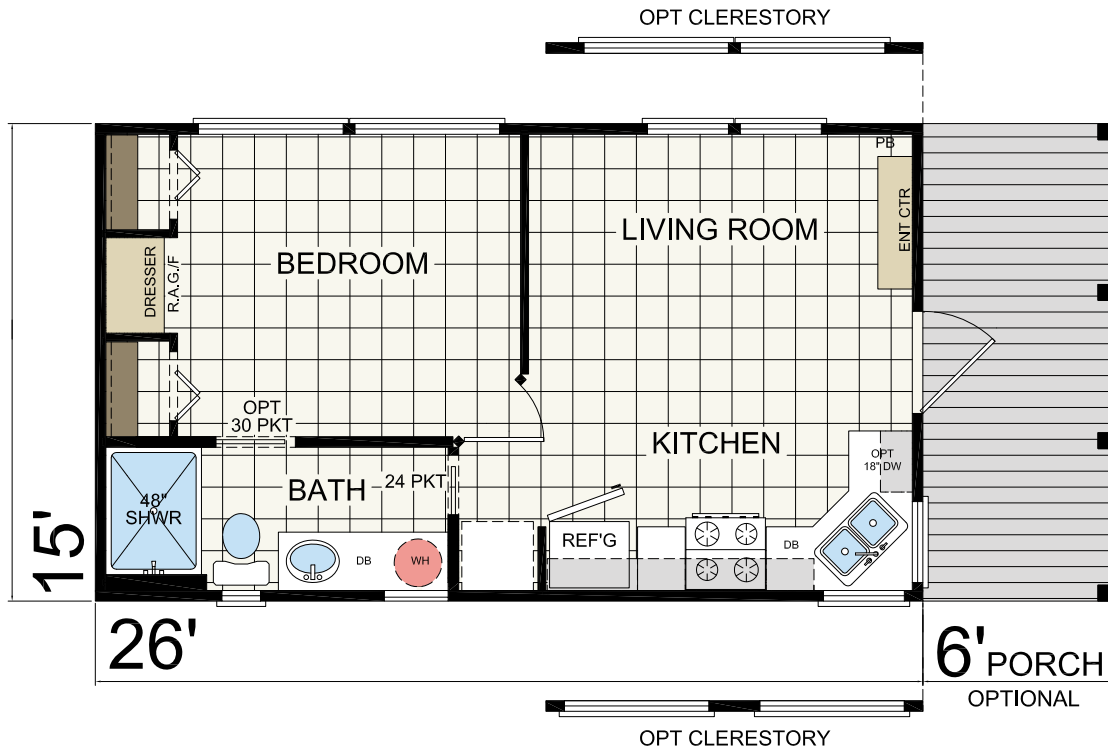
Model 527-SL 11'-2" x 34'-10" | 1 bed-1 bath | 399<sub>sq.ft.</sub>



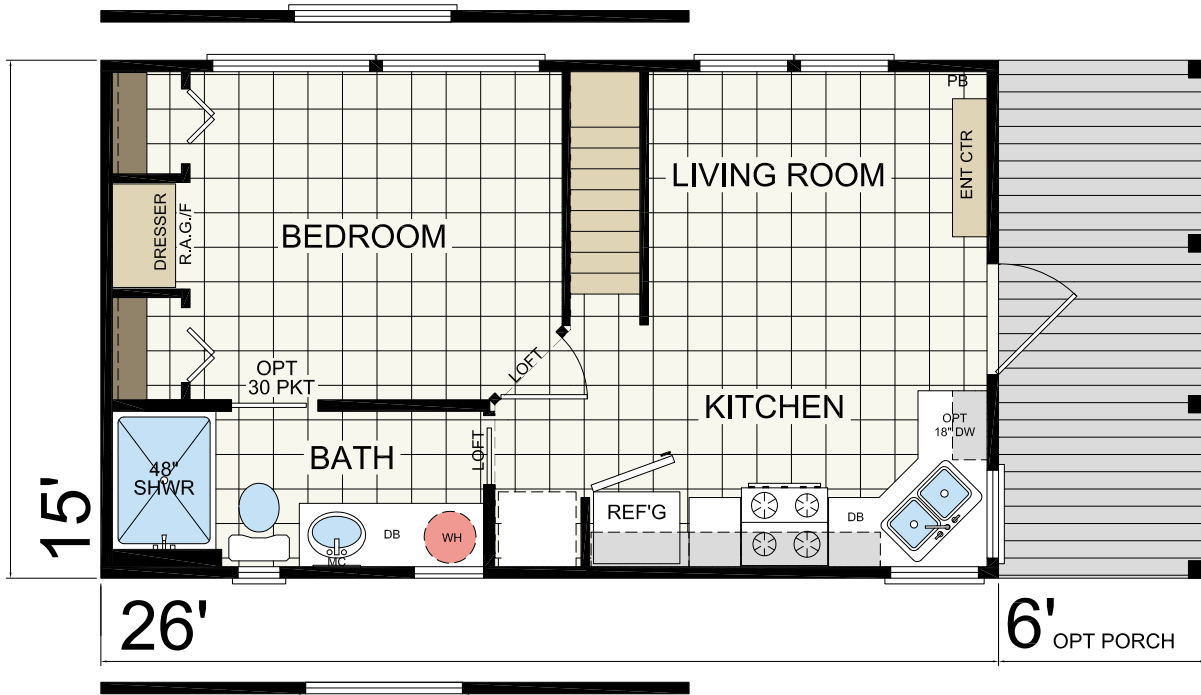
Model 529 11'-2" x 40'-4" | 1 bed-1 bunk-1 bath | 399<sub>sq.ft.</sub>



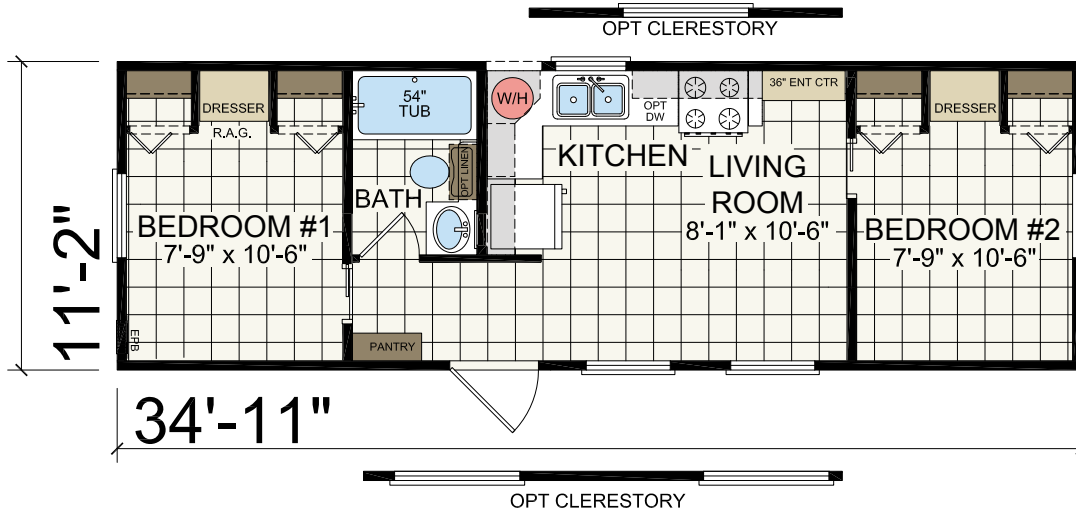
Model 530 15' x 26' | 1 bed-1 bath | 399 sq.ft.



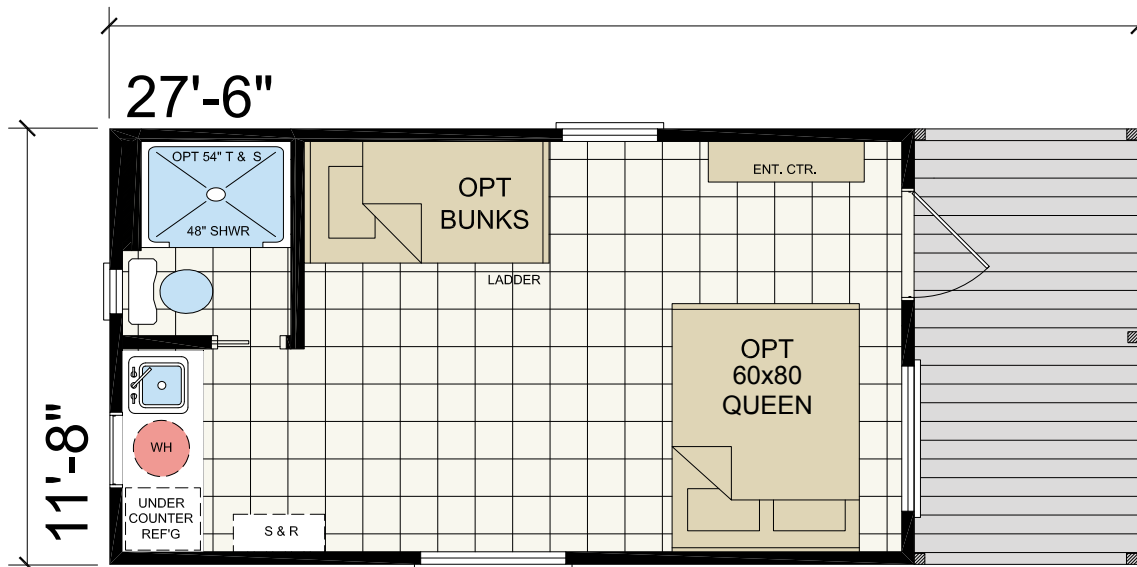
Model 530-SL 15' x 26' | 1 bed-1 bath | 399 sq.ft.

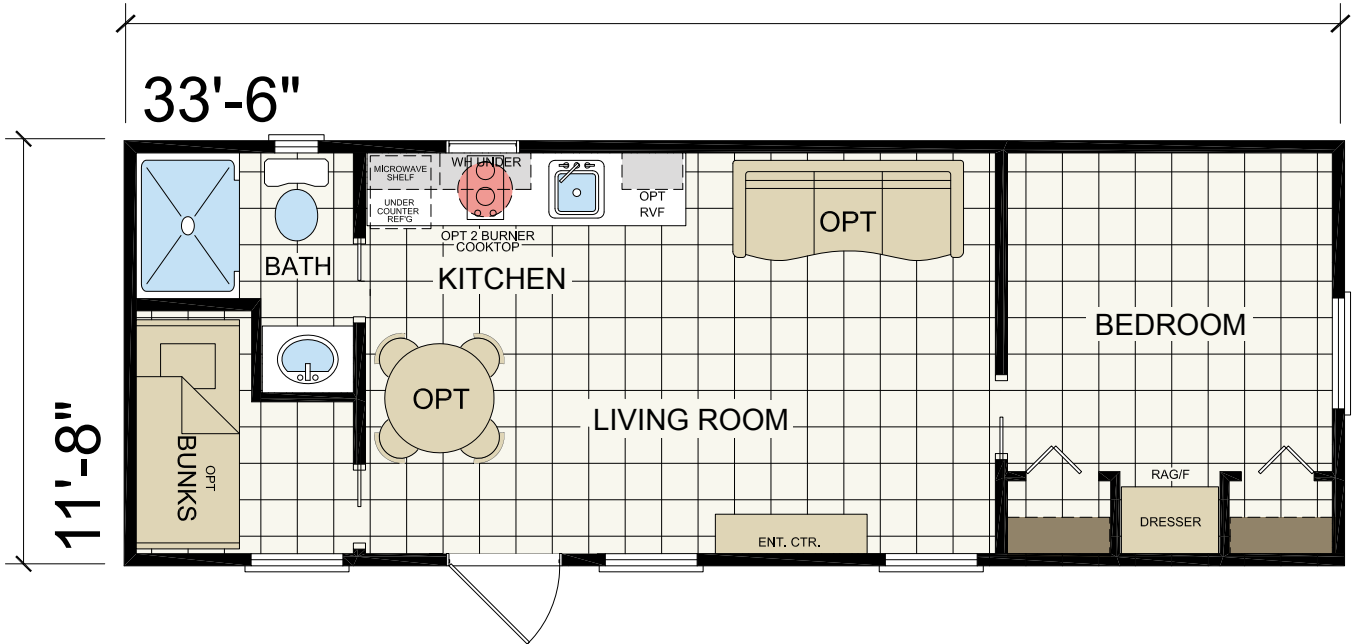


Model 531 11'-2" x 34'-11" | 2 bed-1 bath | 399 sq.ft.



Model 590 11'-8" x 27'-6" | 1 bed-1 bath | 256 sq.ft.







# Standard Features

## Energy-Saving Comfort Features:

Insulated tilt and clean single hung Low E windows w/grids  
36x80 Nine lite steel or patio sliding door (per print)  
R-22 Fiberglass insulation in roof  
R-11 Fiberglass insulation in sidewalls and floors  
Vented attic with vapor barrier  
Fire extinguisher  
40,000 BTU gas furnace w/auto ignition (most models)  
Energy-saving house wrap around park model

## Heavy-Duty Exterior Construction Features:

Covered front porch (optional most models)  
2 Window box bay (standard on some models)  
Pentzoid window on hitch end (standard on most models)  
Heavy asphalt/fiberglass 25-year shingles  
2x6 floor and 2x4 sidewall construction 16" O.C.  
Engineered roof trusses  
26 Gauge straps from sidewall to floor  
26 Gauge straps from roof to sidewall  
Customized full length 10" steel "I" beam frame  
6 Hurricane straps  
Cempanel® fiber-cement siding by James Hardie®  
High-density Sheptex® (rodent proof) underbelly  
Detachable hitch  
Front and rear overhang

## Heavy-Duty Interior Construction Features:

Interior 90° sidewall w/cathedral-style vaulted ceiling  
Tape and textured sheetrock walls  
Textured ceiling  
5/8" OSB T&G floor decking  
Sealed OSB at entry doors and plumbing locations  
Cased windows throughout

## Kitchen Features:

18 cu. ft. refrigerator  
30" Self-cleaning gas range  
Power range hood and light  
Durable wood cabinet doors and drawer fronts  
Flip down sink trays in kitchen  
Lined overhead cabinets  
Ceramic tile backsplash  
Hidden cabinet door hinges  
Premium metal drawer guides and rollers  
Stainless steel kitchen sink w/single-lever faucet & sprayer  
High-pressure laminate countertops w/rounded edge

## Bedroom Features:

Built-in chest of drawers (per print)  
His & Her closet w/bi-fold doors (per print)

## Bathroom Features:

1-Pc 48" fiberglass shower w/shower door (per print)  
China lavatory sink w/metal faucets  
Ceramic tile backsplash  
Porcelain elongated toilet  
Recessed mirrored medicine cabinet w/light  
Installed towel bar and paper holder

## Convenience Features:

ANSI A119.5 coded - RVIA inspected and approved  
50 Amp electrical service w/pigtail  
20 Gallon electric water heater w/interior switch  
No-wax linoleum flooring throughout  
Residential toggle light switches  
Exterior GFCI 110 volt receptacle  
Smoke detector  
Shutoff valves throughout  
Energy-efficient LED can lighting (in most areas)  
Upgraded patio light  
Deluxe valances  
2" Blinds throughout  
Entertainment center (per print)  
PEX water lines

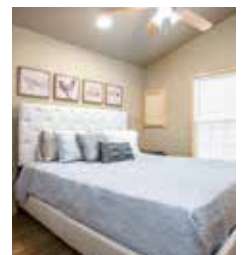
## Popular Options

29 Gauge metal roof  
Clerestory dormers  
Lofts (carpet on stairs and in loft)  
Electric fireplace  
Stainless Steel Appliances  
Microwave Oven  
18" Dishwasher  
Island  
Washer / dryer  
Tile shower  
Porches  
Barn doors

## Building Quality Park Model RV's for over 10 Years!



Due to continuous product development and improvement, prices, specifications, and materials are subject to change without notice or obligation. Square footage and other dimensions are approximate. Exterior images may be artist renderings and are not intended to be an accurate representation of the home. Renderings, photos and floor plans may be shown with optional features or third-party additions.



Prices and specifications are subject to change without notice



FAMILY  
FRIENDS  
FUN  
ATHENS  
PARK





# ATHENS™

## PARK MODEL RV'S



TINY HOUSE VILLAGE

17325 Camino Real

Mustang Ridge,

TX 78616

(512) 456-0899

(512) 385-9700

[TexasTinyVillage.com](http://TexasTinyVillage.com)

CHAMPION®

MANUFACTURED BEAUTIFULLY™

07162500